



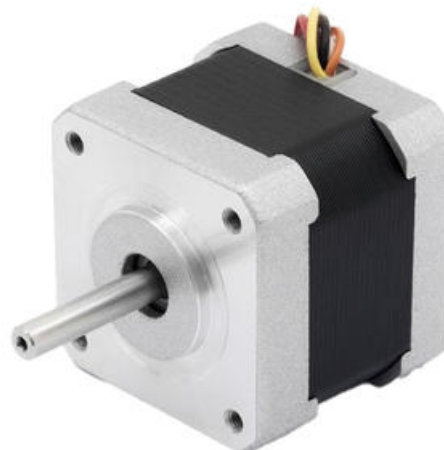
FULLING 2-PHASE HYBRID STEP MOTOR 39X39 MM 1.8°

FL39ST20-0404UEN

FL39ST20-0404B-UEN prep. for E5 enc.



- Classic design with lower moment of inertia
- Customised winding or shaft
- Option with encoder and gear
- Long service life
- Nema 16



PRODUCT DESCRIPTION

Fulling Motor Company is a leading motor manufacturer from Changzhou city in China.

Offering hybrid stepper and brushless DC motors, they have an annual capability in excess of 1.5 million pieces.

Used around the world in many different and varied applications, the Fulling Motor Company is committed to quality and service.

TECHNICAL DATA

Front size	39x39
Holding torque	0,06374 Nm
Inductance	6 mH
Length	20 mm
Moment of inertia	11 g.cm ²
Phase current	0,4 A
Resistance	6,6 Ω
Step angle	1,8 °
Weight	0,12 kg

